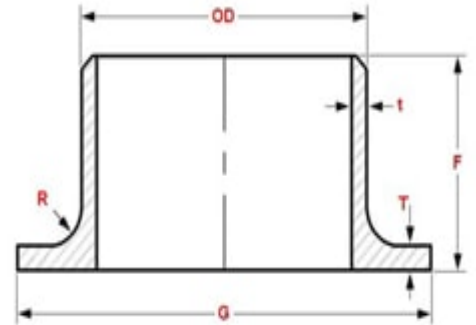


**Manufacturers & Stockists of Nickel Alloy, Titanium Alloys, Special Metals & Stainless Steel Products**

## STUB END

Jade Special Metals is one of the finest distinguished exporters and dealers of Stub End Pipe Fittings, which is non-magnetic, and provides excellent toughness, weld ability and formability. In several applications, Stainless Steel Stub End Pipe Fittings has been discovered to be an additional reasonable substitute for elevated titanium and nickel alloys. A number of usual applications of these Carbon Steel Stub End Pipe Fittings are marine atmosphere, off shore and also in chemical industries. These Alloy Steel Stub End Pipe Fittings was industrialized for the usage in halide-comprising atmospheres like seawater. Super Duplex Steel Stub End Pipe Fittings is austenitic steel considered for supreme crevice corrosion and resistance to pitting. Inconel Alloy Stub End Pipe Fittings is austenitic steel designed for maximum resistance to pitting and crevice corrosion.



**Standards :** ASME / ANSI - B 16.9, ASTM A403 - ASME SA403, ASME B16.9, ASME B16.25, ASME B16.28, MSS SP-43.

**Thickness :** Schedule 5S, 10S, 20S, S10, S20, S30, STD, 40S, S40, S60, XS, 80S, S80, S100, S120, S140, S160, XXS and etc.

**Size :** 1/2"NB TO 36"NB IN

**Type :** Seamless / ERW / Welded / Fabricated

**Form :** Long Stub Ends, Short Stub Ends, Lap Joint Stub Ends.

### Stub End Material & Grades

#### **Stainless Steel Stub End :**

ASTM A403 WP316/316L, ASTM A403 SA / A 774 WP-S, WP-W, WP-WX 304/304L, ASTM A182 F316L, 304L, DIN 1.4301, DIN1.4306, DIN 1.4401, DIN 1.4404

#### **Duplex & Super Duplex Steel Stub End :**

ASTM A815, ASME SA 815 UNS NO S31803, S32205. UNS S32750, S32950. Werkstoff No. 1.4462

#### **Carbon Steel Stub End :**

ASTM A234, ASME SA234 WPB , WPBW, WPHY 42, WPHY 46, WPHY 52, WPH 60, WPHY 65 & WPHY 70.

**Manufacturers & Stockists of Nickel Alloy, Titanium Alloys, Special Metals & Stainless Steel Products**

**Low Temperature Carbon Steel Stub End:** ASTM A420 WPL3, A420 WPL6

**Alloy Steel Stub End:**

ASTM / ASME A/SA 234 Gr. WP 1, WP 5, WP 9, WP 11, WP 12, WP 22, WP 91

**Copper Alloy Steel Stub End:** ASTM B122, B171, B466, B467, ASTM SB 61 , SB62 , SB151 , SB152 UNS No. C70600 (Cu-Ni 90/10), C 71500 (Cu-Ni 70/30), UNS No. C 10100, 10200, 10300, 10800, 12000, 12200

**Nickel Alloy Buttweld Stub End:**

ASTM SB564, SB160, SB472, SB162 Nickel 200 (UNS No. N02200), Nickel 201 (UNS No. N02201), Monel 400 (UNS No. N04400), Monel 500 (UNS No. N05500), Inconel 800 (UNS No. N08800), Inconel 825 (UNS No. N08825), Inconel 600 (UNS No. N06600), Inconel 625 (UNS No. N06625), Inconel 601 (UNS No. N06601), Hastelloy C 276 (UNS No. N10276), Alloy 20 (UNS No. N08020), Titanium (Grade 2 & 5)

LONG STUB END



SHORT STUB END



MSS SP-43 TYPE A STUB END



We offer wide range of Stub Endsthat in compliance with ASTM, ANSI, IS, BS and DIN standards at best Market prices in India. To know more about the latest price of Stub Ends please feel free to contact us on [sales@jadealloys.com](mailto:sales@jadealloys.com) or call us on +91 9987685906